

A woman with dark hair styled in an updo, wearing a white sleeveless crop top and a black skirt with a vibrant floral pattern, stands in a lush garden. In the background, there is a swimming pool, a well-manicured lawn, and a house with a tiled roof. The sky is clear and blue.

# Miami

2 BHK & Garden Apartments

ZRICKS

Home Finance available from SBI, HDFC, ICICI & Axis Bank

[www.Zricks.com](http://www.Zricks.com)

# GRAND ENTRANCE WITH WATER CASCADE WALL & FOUNTAIN

Miami  
2 BHK & Garden Apartments



# BIRD'S EYE VIEW

Miami  
2 BHK & Garden Apartments



## Amenities

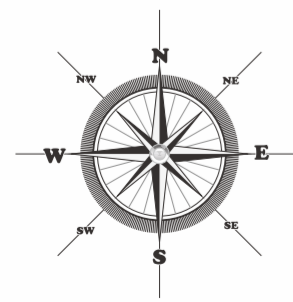
- Landscaped garden with articulate water features
- Water fountain
- Club House with Yoga & Meditation Hall & Library
- Designer lawn
- Barbeque Counter
- Well Equipped Gymnasium
- Swimming Pool
- Children's play area
- Community hall
- Basketball practice court
- Jogging track
- Peace zone for senior citizens
- Snake & Ladder and Chess board area
- Vehicle free zone to avoid pollution
- Easy access to mini-market & retail within project
- Grand entrance lobby
- Automatic and manual Schindler Elevators with SS quote & ARD
- Stretcher lift
- 24-hours security and surveillance
- Ample car parking
- Good light and ventilation in all buildings
- Elegant compound wall
- Reticulated Gas Pipeline system
- Individual nameplate and letter box
- Fire fighting system
- Rain water harvesting
- Power backup for lifts and common areas
- Durable exterior texture painting
- Earth quake resistant building design
- Concrete paved internal roads

## Specifications

- 2 X 2 Vitrified Tile Flooring
- Granite Kitchen Platform with S.S. sink
- Toilet Dado up to Lintel Level
- Grohe or equivalent CP fittings
- Anti-Skid Ceramic Tile Flooring for toilet and terraces
- Aluminum Powder Coated Windows with Mosquito Mesh
- Laminated Flush Doors
- Concealed Electrical Wiring and Plumbing
- Legrand Electrical Switches
- Provision for A.C. in Bedrooms
- Cera or equivalent Sanitary fittings
- Solar water heating system's

# BUILDING "A" - 1ST FLOOR PLAN

## GARDEN APARTMENT

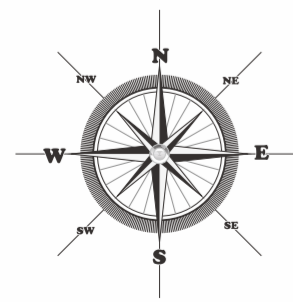


### AREA STATEMENT

| BUILDING A (WING A1) 1ST FLOOR |          |               |                  |        |              |                |
|--------------------------------|----------|---------------|------------------|--------|--------------|----------------|
| FLOOR                          | FLAT NO. | FLAT SALEABLE | TERRACE SALEABLE | GARDEN | REAR TERRACE | TOTAL SALEABLE |
| 1ST                            | 101      | 879           | 287              | 715    | 0            | 1524           |
| 1ST                            | 102      | 813           | 210              | 395    | 386          | 1414           |
| 1ST                            | 103      | 879           | 276              | 870    | 0            | 1590           |
| TOTAL                          |          |               |                  |        |              | 4528           |

| BUILDING A (WING A2) 1ST FLOOR |          |               |                  |        |              |                |
|--------------------------------|----------|---------------|------------------|--------|--------------|----------------|
| FLOOR                          | FLAT NO. | FLAT SALEABLE | TERRACE SALEABLE | GARDEN | REAR TERRACE | TOTAL SALEABLE |
| 1ST                            | 101      | 879           | 276              | 1044   | 0            | 1677           |
| 1ST                            | 102      | 813           | 202              | 557    | 367          | 1477           |
| 1ST                            | 103      | 879           | 276              | 896    | 0            | 1603           |
| TOTAL                          |          |               |                  |        |              | 4757           |

# BUILDING "A" - EVEN FLOOR PLAN

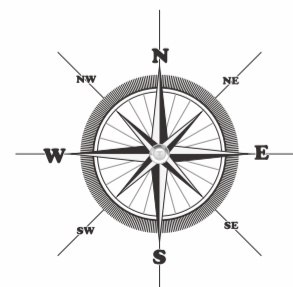


### AREA STATEMENT

| BUILDING A (WING A1) EVEN FLOOR |                      |               |                  |        |                |
|---------------------------------|----------------------|---------------|------------------|--------|----------------|
| FLOOR                           | FLAT NO.             | FLAT SALEABLE | TERRACE SALEABLE | GARDEN | TOTAL SALEABLE |
| 2ND, 4TH,                       | 201,401,601,801,1001 | 881           | 248              | 0.00   | 1129           |
| 6TH, 8TH,                       | 202,402,602,1002     | 816           | 188              | 0.00   | 1004           |
| 10TH                            | 203,403,603,803,1003 | 881           | 248              | 0.00   | 1129           |
|                                 | TOTAL                |               |                  |        | 3262           |

| BUILDING A (WING A2) EVEN FLOOR |                      |               |                  |        |                |
|---------------------------------|----------------------|---------------|------------------|--------|----------------|
| FLOOR                           | FLAT NO.             | FLAT SALEABLE | TERRACE SALEABLE | GARDEN | TOTAL SALEABLE |
| 2ND, 4TH,                       | 201,401,601,801,1001 | 881           | 248              | 0.00   | 1129           |
| 6TH, 8TH,                       | 202,402,602,802,1002 | 816           | 188              | 0.00   | 1004           |
| 10TH                            | 203,403,603,803,1003 | 881           | 248              | 0.00   | 1129           |
|                                 | TOTAL                |               |                  |        | 3262           |

# BUILDING "A" - ODD FLOOR PLAN

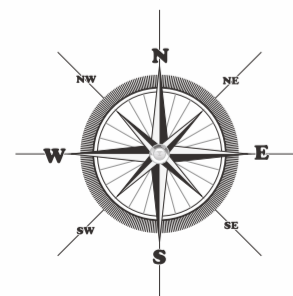
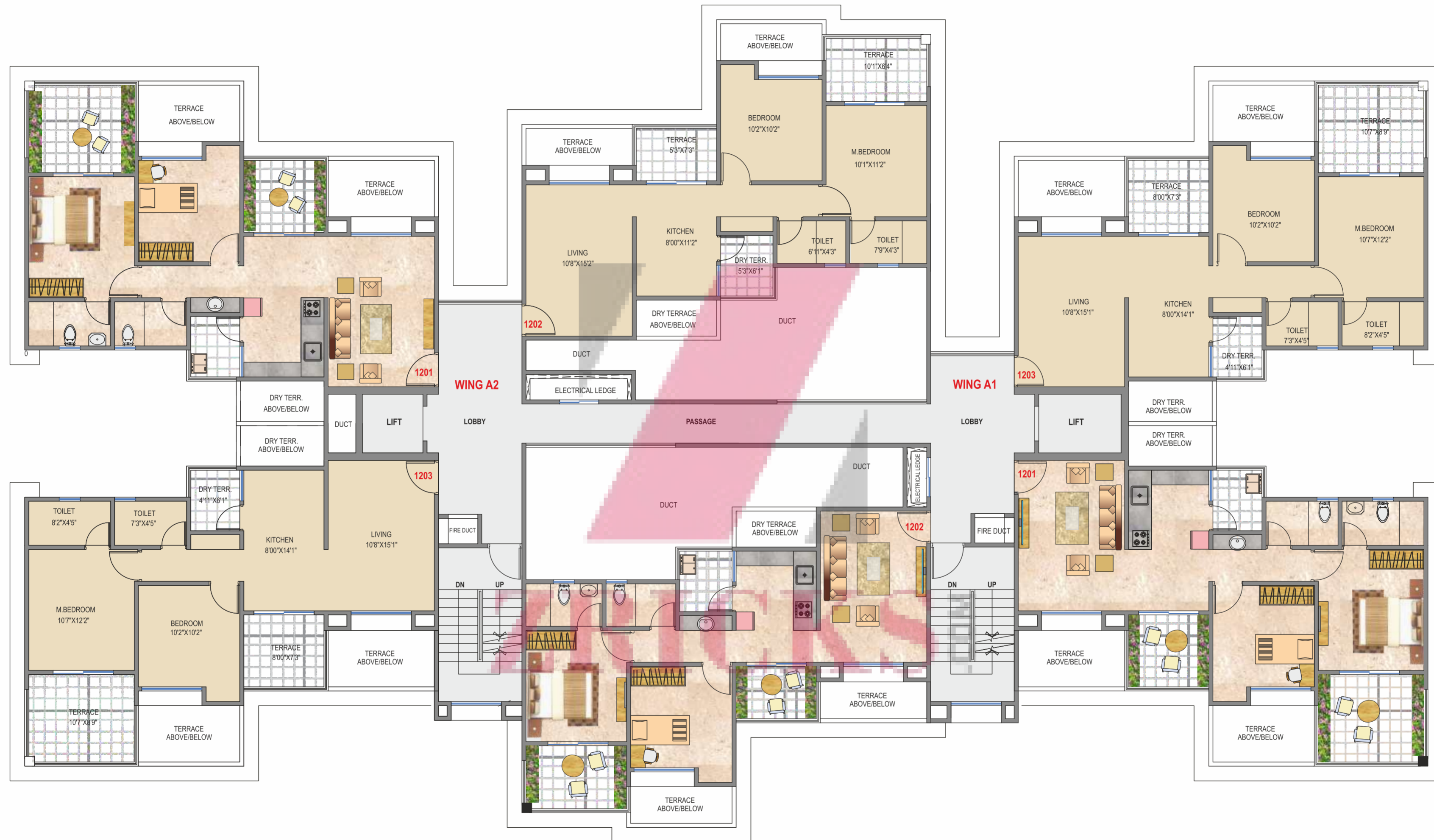


## AREA STATEMENT

| BUILDING A (WING A1) ODD FLOOR |                      |               |                  |        |                |
|--------------------------------|----------------------|---------------|------------------|--------|----------------|
| FLOOR                          | FLAT NO.             | FLAT SALEABLE | TERRACE SALEABLE | GARDEN | TOTAL SALEABLE |
| 3RD, 5TH,                      | 301,501,701,901,1101 | 881           | 247              | 0.00   | 1128           |
| 7TH, 9TH,                      | 302,502,702,902,1102 | 816           | 186              | 0.00   | 1002           |
| 11TH                           | 303,503,703,903,1103 | 881           | 247              | 0.00   | 1128           |
|                                |                      | TOTAL         |                  |        | 3258           |

| BUILDING A (WING A2) ODD FLOOR |                      |               |                  |        |                |
|--------------------------------|----------------------|---------------|------------------|--------|----------------|
| FLOOR                          | FLAT NO.             | FLAT SALEABLE | TERRACE SALEABLE | GARDEN | TOTAL SALEABLE |
| 3RD, 5TH,                      | 301,501,701,901,1101 | 881           | 247              | 0.00   | 1128           |
| 7TH, 9TH,                      | 302,502,702,902,1102 | 816           | 186              | 0.00   | 1002           |
| 11TH                           | 303,503,703,903,1103 | 881           | 247              | 0.00   | 1128           |
|                                |                      | TOTAL         |                  |        | 3258           |

# BUILDING "A" - 12TH FLOOR PLAN



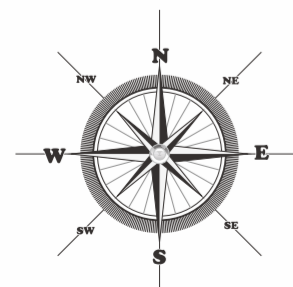
## AREA STATEMENT

| BUILDING A (WING A1) TWELFTH FLOOR |          |               |                  |        |                |
|------------------------------------|----------|---------------|------------------|--------|----------------|
| FLOOR                              | FLAT NO. | FLAT SALEABLE | TERRACE SALEABLE | GARDEN | TOTAL SALEABLE |
| 12TH                               | 1201     | 889           | 253              | 0.00   | 1142           |
|                                    | 1202     | 826           | 192              | 0.00   | 1018           |
|                                    | 1203     | 889           | 253              | 0.00   | 1142           |
|                                    | TOTAL    |               |                  |        | 3302           |

| BUILDING A (WING A2) TWELFTH FLOOR |          |               |                  |        |                |
|------------------------------------|----------|---------------|------------------|--------|----------------|
| FLOOR                              | FLAT NO. | FLAT SALEABLE | TERRACE SALEABLE | GARDEN | TOTAL SALEABLE |
| 12TH                               | 1201     | 889           | 253              | 0.00   | 1142           |
|                                    | 1202     | 826           | 192              | 0.00   | 1018           |
|                                    | 1203     | 889           | 253              | 0.00   | 1142           |
|                                    | TOTAL    |               |                  |        | 3302           |



# BUILDING "A" - 13TH FLOOR PLAN



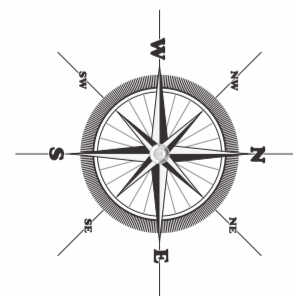
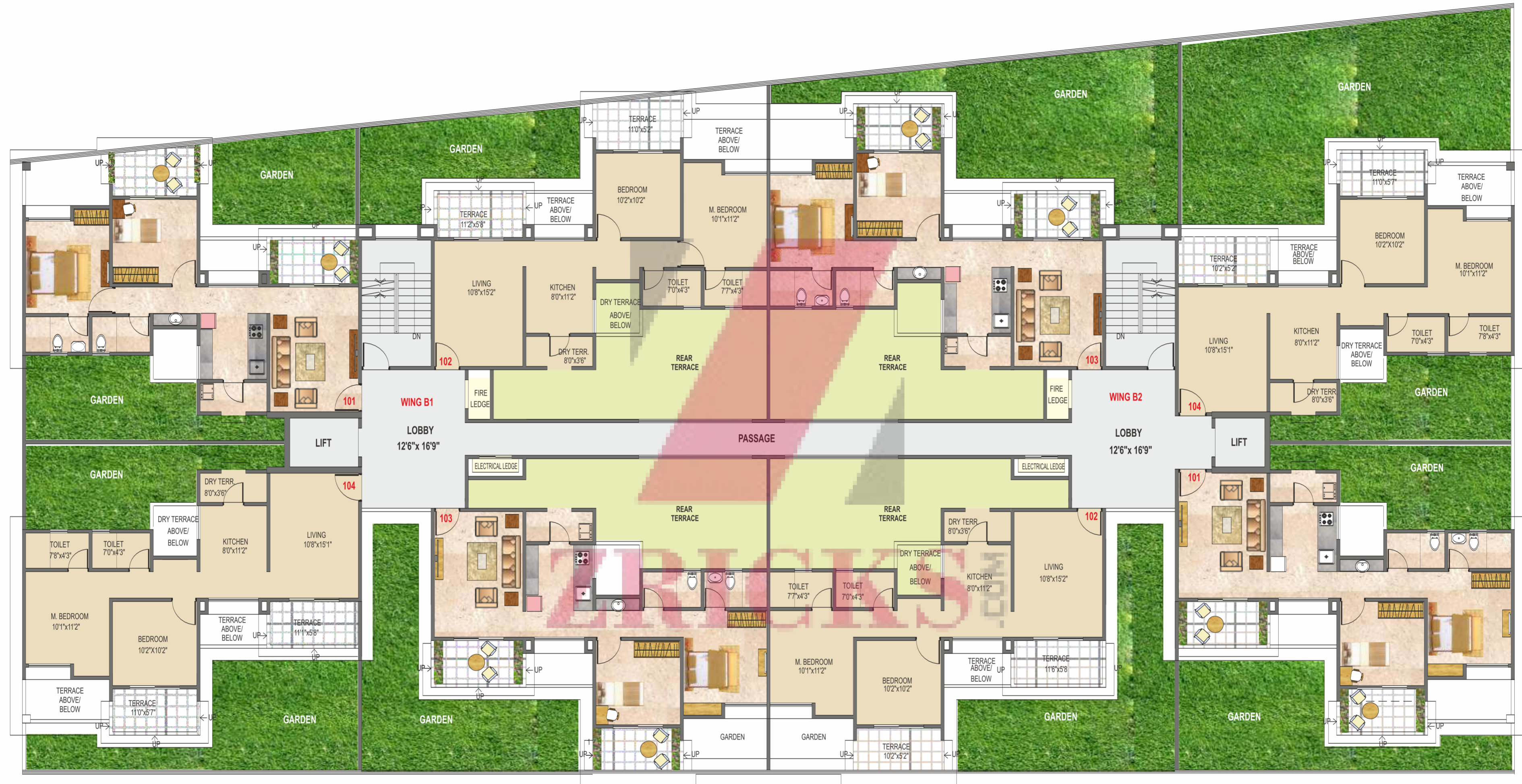
### AREA STATEMENT

| BUILDING A (WING A1) THIRTEENTH FLOOR |          |               |                  |        |                |
|---------------------------------------|----------|---------------|------------------|--------|----------------|
| FLOOR                                 | FLAT NO. | FLAT SALEABLE | TERRACE SALEABLE | GARDEN | TOTAL SALEABLE |
| 13TH                                  | 1301     | 890           | 254              | 0.00   | 1144           |
|                                       | 1302     | 613           | 418              | 0.00   | 1031           |
|                                       | 1303     | 890           | 254              | 0.00   | 1144           |
|                                       | TOTAL    |               |                  |        | 3319           |

| BUILDING A (WING A2) THIRTEENTH FLOOR |          |               |                  |        |                |
|---------------------------------------|----------|---------------|------------------|--------|----------------|
| FLOOR                                 | FLAT NO. | FLAT SALEABLE | TERRACE SALEABLE | GARDEN | TOTAL SALEABLE |
| 13TH                                  | 1301     | 890           | 254              | 0.00   | 1144           |
|                                       | 1302     | 825           | 189              | 0.00   | 1014           |
|                                       | 1303     | 890           | 253              | 0.00   | 1144           |
|                                       | TOTAL    |               |                  |        | 3302           |

# BUILDING " B " - 1ST FLOOR PLAN

## GARDEN APARTMENT

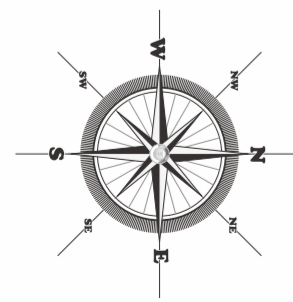


### AREA STATEMENT

| BUILDING B (WING B1) 1ST FLOOR |          |               |                  |        |              |                |
|--------------------------------|----------|---------------|------------------|--------|--------------|----------------|
| FLOOR                          | FLAT NO. | FLAT SALEABLE | TERRACE SALEABLE | GARDEN | REAR TERRACE | TOTAL SALEABLE |
| 1ST                            | 101      | 826           | 213              | 579    | 0            | 1329           |
| 1ST                            | 102      | 827           | 223              | 411    | 365          | 1438           |
| 1ST                            | 103      | 827           | 209              | 550    | 366          | 1494           |
| 1ST                            | 104      | 826           | 213              | 735    | 0            | 1407           |
| TOTAL                          |          |               |                  |        |              | 5668           |

| BUILDING B (WING B2) 1ST FLOOR |          |               |                  |        |              |                |
|--------------------------------|----------|---------------|------------------|--------|--------------|----------------|
| FLOOR                          | FLAT NO. | FLAT SALEABLE | TERRACE SALEABLE | GARDEN | REAR TERRACE | TOTAL SALEABLE |
| 1ST                            | 101      | 826           | 213              | 726    | 0            | 1402           |
| 1ST                            | 102      | 827           | 209              | 553    | 365          | 1495           |
| 1ST                            | 103      | 827           | 215              | 671    | 365          | 1560           |
| 1ST                            | 104      | 826           | 213              | 1154   | 0            | 1616           |
| TOTAL                          |          |               |                  |        |              | 6073           |

# BUILDING " B " - EVEN FLOOR PLAN

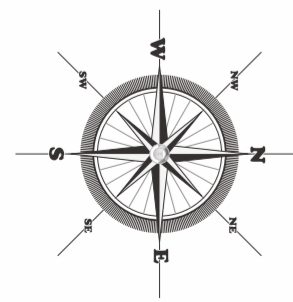
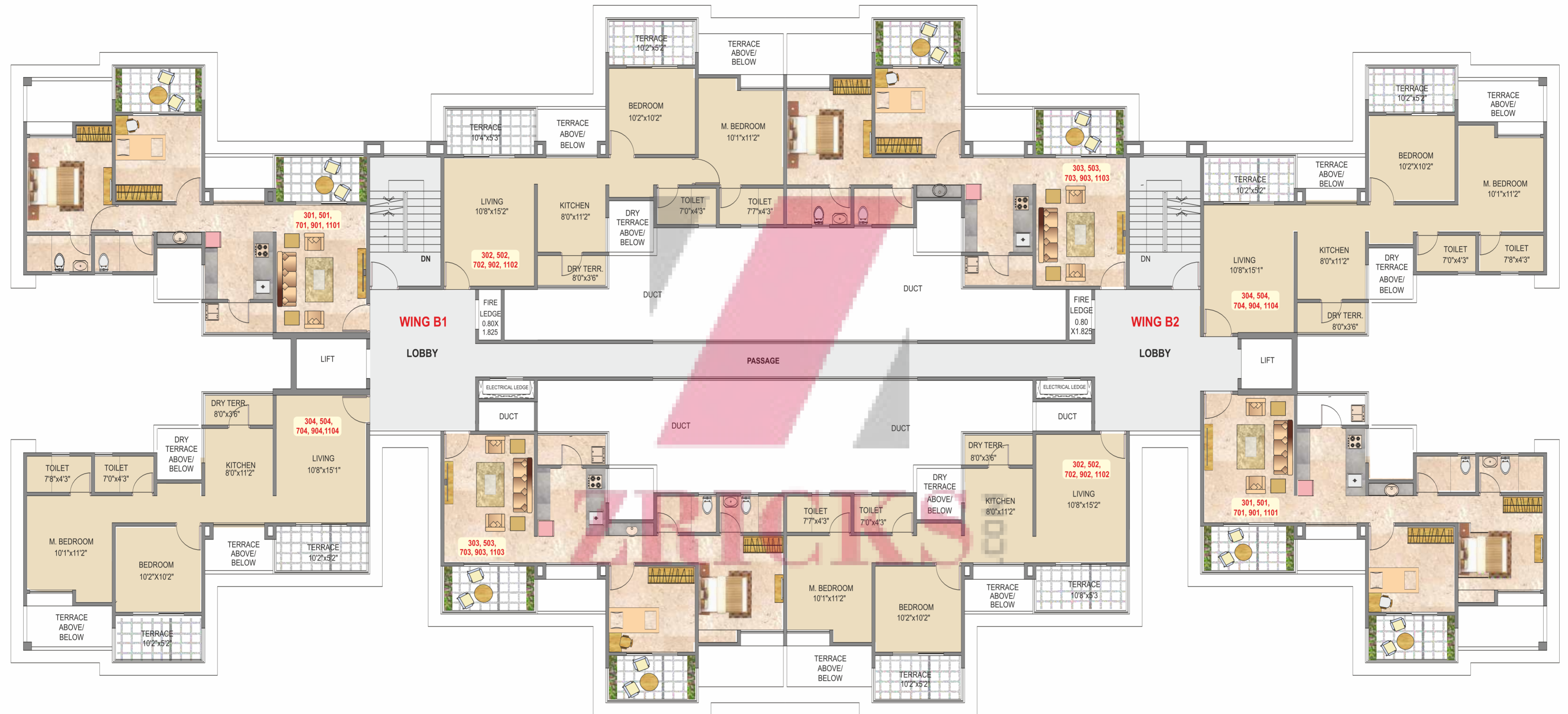


## AREA STATEMENT

| BUILDING B (WING B1) EVEN FLOOR |  |               |                  |        |                |
|---------------------------------|--|---------------|------------------|--------|----------------|
| FLOOR                           | FLAT NO.   | FLAT SALEABLE | TERRACE SALEABLE | GARDEN | TOTAL SALEABLE |
| 2ND, 4TH, 6TH, 8TH, 10TH, 12TH  | 201, 204, 401, 404, 601, 604, 801, 804, 1001, 1004, 1201, 1204 | 827           | 193              | 0.00   | 1020           |
|                                 | 202, 203, 402, 403, 602, 603, 803, 1002, 1003, 1202, 1203      | 827           | 193              | 0.00   | 1020           |
| TOTAL                           |  |               |                  |        | 2040           |

| BUILDING B (WING B2) EVEN FLOOR |  |               |                  |        |                |
|---------------------------------|--|---------------|------------------|--------|----------------|
| FLOOR                           | FLAT NO.   | FLAT SALEABLE | TERRACE SALEABLE | GARDEN | TOTAL SALEABLE |
| 2ND, 4TH, 6TH, 8TH, 10TH, 12TH  | 201, 204, 401, 404, 601, 604, 801, 804, 1001, 1004, 1201, 1204 | 827           | 193              | 0.00   | 1020           |
|                                 | 202, 203, 402, 403, 602, 603, 802, 1002, 1003, 1202, 1203      | 827           | 193              | 0.00   | 1020           |
| TOTAL                           |  |               |                  |        | 2040           |

# BUILDING " B " - ODD FLOOR PLAN



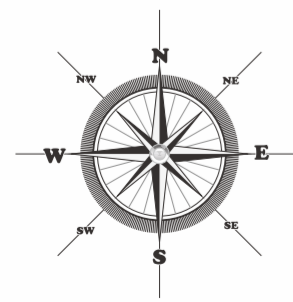
## AREA STATEMENT

| BUILDING B (WING B1) ODD FLOOR |  |               |                  |        |                |
|--------------------------------|--|---------------|------------------|--------|----------------|
| FLOOR                          | FLAT NO.                                   | FLAT SALEABLE | TERRACE SALEABLE | GARDEN | TOTAL SALEABLE |
| 3RD, 5TH, 7TH, 9TH, 11TH       | 301,304,501,504,701, 704,901,904,1101 1104 | 826           | 192              | 0.00   | 1018           |
|                                | 302,303,502,503,702, 703,902,903,1102 1103 | 827           | 189              | 0.00   | 1016           |
|                                | <b>TOTAL</b>                               |               |                  |        | <b>2034</b>    |

| BUILDING B (WING B2) ODD FLOOR |  |               |                  |        |                |
|--------------------------------|--|---------------|------------------|--------|----------------|
| FLOOR                          | FLAT NO.                                   | FLAT SALEABLE | TERRACE SALEABLE | GARDEN | TOTAL SALEABLE |
| 3RD, 5TH, 7TH, 9TH, 11TH       | 301,304,501,504,701, 704,901,904,1101 1104 | 826           | 192              | 0.00   | 1018           |
|                                | 302,303,502,503,702, 703,902,903,1102 1103 | 827           | 189              | 0.00   | 1016           |
|                                | <b>TOTAL</b>                               |               |                  |        | <b>2034</b>    |

# BUILDING " C " - 1ST FLOOR PLAN

## GARDEN APARTMENT

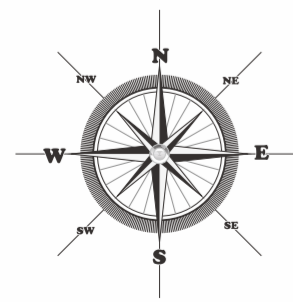


### AREA STATEMENT

| BUILDING C (WING C1) 1ST FLOOR |          |               |                  |        |              |                |
|--------------------------------|----------|---------------|------------------|--------|--------------|----------------|
| FLOOR                          | FLAT NO. | FLAT SALEABLE | TERRACE SALEABLE | GARDEN | REAR TERRACE | TOTAL SALEABLE |
| 1ST                            | 101      | 826           | 213              | 1175   | 0            | 1627           |
| 1ST                            | 102      | 826           | 211              | 643    | 366          | 1542           |
| 1ST                            | 103      | 826           | 207              | 286    | 366          | 1359           |
| 1ST                            | 104      | 826           | 213              | 732    | 0            | 1405           |
| TOTAL                          |          |               |                  |        |              | 5933           |

| BUILDING C (WING C2) 1ST FLOOR |          |               |                  |        |              |                |
|--------------------------------|----------|---------------|------------------|--------|--------------|----------------|
| FLOOR                          | FLAT NO. | FLAT SALEABLE | TERRACE SALEABLE | GARDEN | REAR TERRACE | TOTAL SALEABLE |
| 1ST                            | 101      | 826           | 213              | 715    | 0            | 1397           |
| 1ST                            | 102      | 826           | 204              | 544    | 366          | 1485           |
| 1ST                            | 103      | 826           | 220              | 368    | 366          | 1413           |
| 1ST                            | 104      | 826           | 207              | 566    | 0            | 1317           |
| TOTAL                          |          |               |                  |        |              | 5612           |

# BUILDING " C " - EVEN FLOOR PLAN

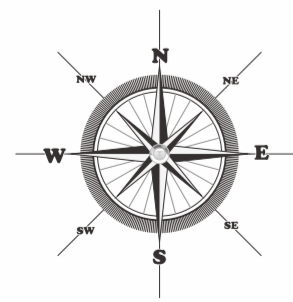


## AREA STATEMENT

| BUILDING C (WING C1) EVEN FLOOR |  |               |                  |        |                |
|---------------------------------|--|---------------|------------------|--------|----------------|
| FLOOR                           | FLAT NO.   | FLAT SALEABLE | TERRACE SALEABLE | GARDEN | TOTAL SALEABLE |
| 2ND, 4TH, 6TH, 8TH, 10TH, 12TH  | 201, 204, 401, 404, 601, 604, 801, 804, 1001, 1004, 1201, 1204 | 827           | 193              | 0.00   | 1020           |
|                                 | 202, 203, 402, 403, 602, 603, 803, 1002, 1003, 1202, 1203      | 827           | 193              | 0.00   | 1020           |
| TOTAL                           |  |               |                  |        | 2040           |

| BUILDING C (WING C2) EVEN FLOOR |  |               |                  |        |                |
|---------------------------------|--|---------------|------------------|--------|----------------|
| FLOOR                           | FLAT NO.   | FLAT SALEABLE | TERRACE SALEABLE | GARDEN | TOTAL SALEABLE |
| 2ND, 4TH, 6TH, 8TH, 10TH, 12TH  | 201, 204, 401, 404, 601, 604, 801, 804, 1001, 1004, 1201, 1204 | 827           | 193              | 0.00   | 1020           |
|                                 | 202, 203, 402, 403, 602, 603, 802, 1002, 1003, 1202, 1203      | 826           | 193              | 0.00   | 1020           |
| TOTAL                           |  |               |                  |        | 2040           |

# BUILDING " C " - ODD FLOOR PLAN



## AREA STATEMENT

| BUILDING C (WING C1) ODD FLOOR |  |               |                  |        |                |
|--------------------------------|--|---------------|------------------|--------|----------------|
| FLOOR                          | FLAT NO.   | FLAT SALEABLE | TERRACE SALEABLE | GARDEN | TOTAL SALEABLE |
| 3RD, 5TH, 7TH, 9TH, 11TH       | 301, 304, 501, 504, 701, 704, 901, 904, 1101, 1104 | 826           | 192              | 0.00   | 1018           |
|                                | 302, 303, 502, 503, 702, 703, 902, 903, 1102, 1103 | 826           | 193              | 0.00   | 1019           |
| TOTAL                          |  |               |                  |        | 2037           |

| BUILDING C (WING C2) ODD FLOOR |  |               |                  |        |                |
|--------------------------------|--|---------------|------------------|--------|----------------|
| FLOOR                          | FLAT NO.   | FLAT SALEABLE | TERRACE SALEABLE | GARDEN | TOTAL SALEABLE |
| 3RD, 5TH, 7TH, 9TH, 11TH       | 301, 304, 501, 504, 701, 704, 901, 904, 1101, 1104 | 826           | 192              | 0.00   | 1018           |
|                                | 302, 303, 502, 503, 702, 703, 902, 903, 1102, 1103 | 826           | 193              | 0.00   | 1019           |
| TOTAL                          |  |               |                  |        | 2037           |



'own' your space

Site Address : Near Rajyog Society, Wadgaon Dhayari, Behind Lokmat Press, Sinhagad Road, Pune - 411041

[www.Zricks.com](http://www.Zricks.com)